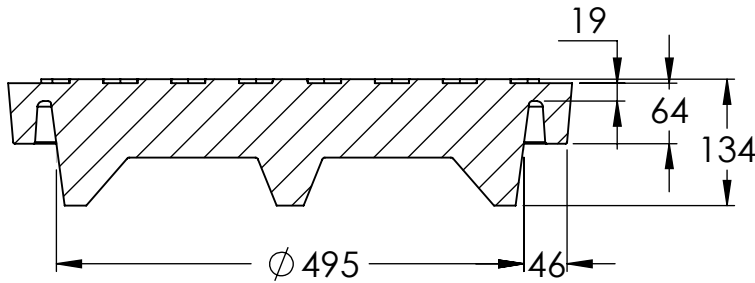
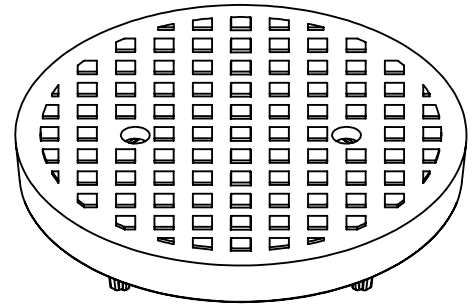
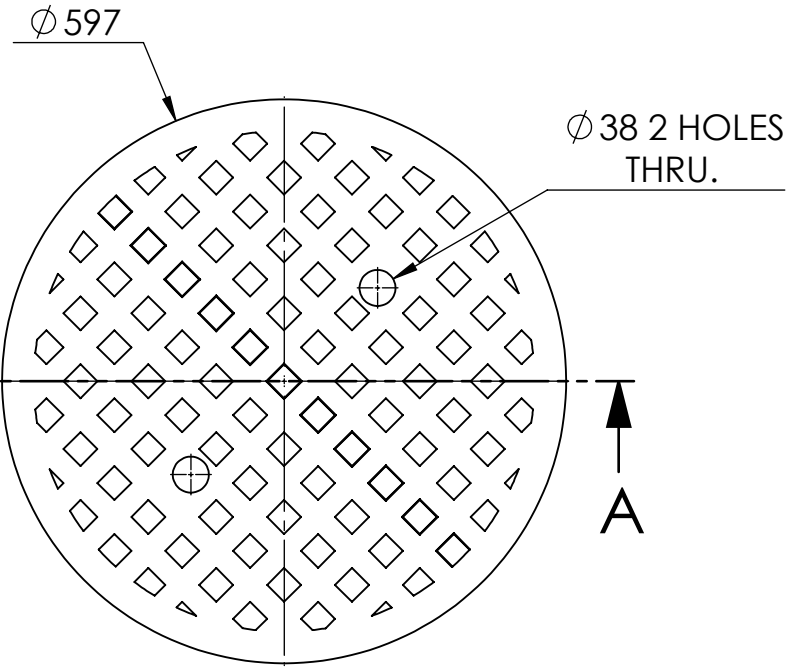


2

1

MATERIAL:
GRAY CAST IRON TO ASTM A48
CLASS 30B



SECTION A-A

- NOTES:
 1) CONFORMS TO CITY OF WINNIPEG AP-007
 2) WEIGHT 61.06 KGS. (134.6 LBS.)
 3) ALL DIMENSIONS ARE IN mm

KAROH

KRMH.007.SMHC.R ROUND MANHOLE SOLID COVER

IDEAL SPECIFIED PRODUCTS

45 SYLVAN WAY.
WINNIPEG (MB) R2R 2B9
CANADA

DESIGNED BY: AG

DESIGN DATE: DEC 6, 2019

REFERENCE DRAWING:

DRAWN BY: AG

REV. DATE: DEC 31/2021

CITY OF WINNIPEG WATER AND
WASTE WASTE DEPT
DRAWING NO: AP-007

CHECKED BY: WF

REV. NO: 1

DO NOT SCALE DRAWING

2

1