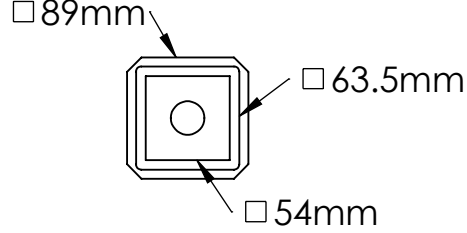
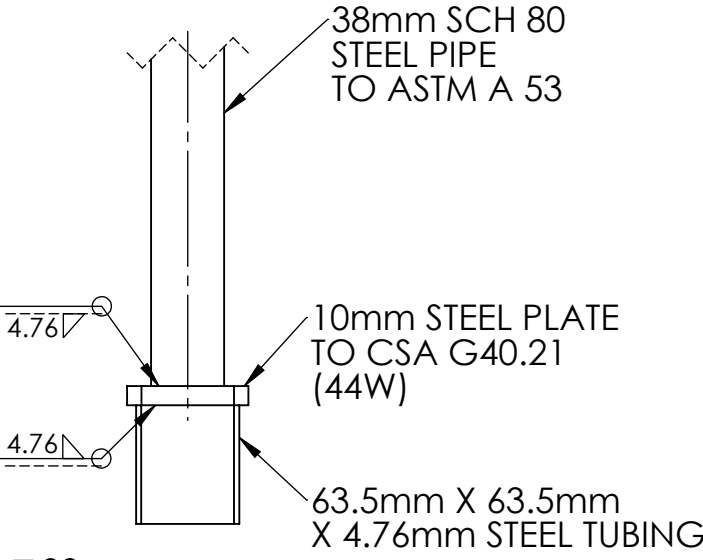
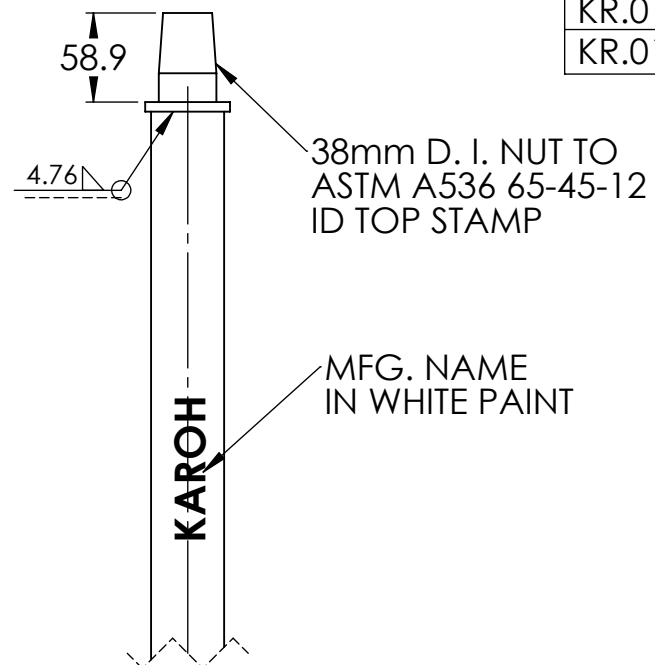


2

1

| PART NO: | ROUND | LENGHT |
|--------------------|-----------------|---------------|
| KR.01.003.ST.SP. 6 | (38mm) (1-1/2") | (1.830m) (6') |
| KR.01.003.ST.SP. 7 | (38mm) (1-1/2") | (2.134m) (7') |
| KR.01.003.ST.SP. 8 | (38mm) (1-1/2") | (2.438m) (8') |
| KR.01.003.ST.SP. 9 | (38mm) (1-1/2") | (2.743m) (9') |



- NOTES:**
1. WELDING CONFORMS TO CSA W59-1989
 2. ALL DIMENSIONS IN MILLIMETERS
 3. UNLESS OTHERWISE SPECIFIED DIMENSIONS SHALL HAVE A TOLERANCE OF +/-2mm AND AN ADDITIONAL +/- 5mm PER METER
 4. PAINTED WITH RED OXIDE PRIMER

KAROH

KR003 VALVE BOX SPINDLE

IDEAL SPECIFIED PRODUCTS
 45 SYLVAN WAY
 WINNIPEG (MB) R2R 2B9
 CANADA

| | |
|----------------------|--------------------------|
| DESIGNED BY: AG | DESIGN DATE: DEC 6, 2019 |
| DRAWN BY: AG | REV. DATE: DEC 31 / 2020 |
| CHECKED BY: WF | REV. NO: 1 |
| DO NOT SCALE DRAWING | |

REFERENCE DRAWING:
 CITY OF WINNIPEG WATER AND WASTE WASTE DEPT
 DRAWING NO: AP-003

2

1