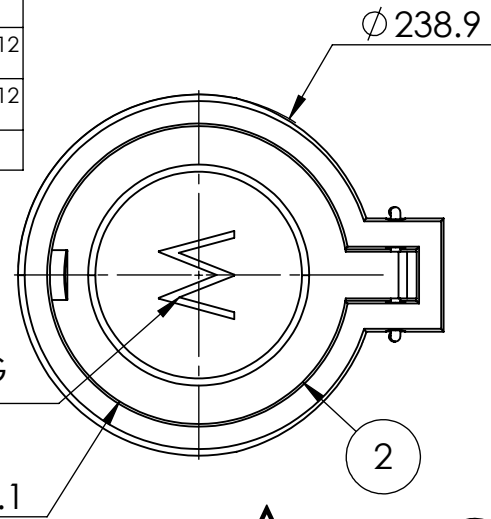


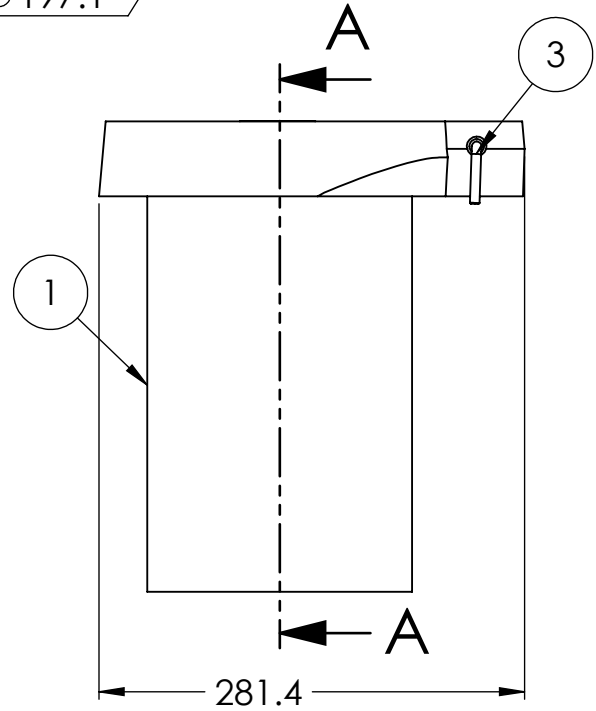
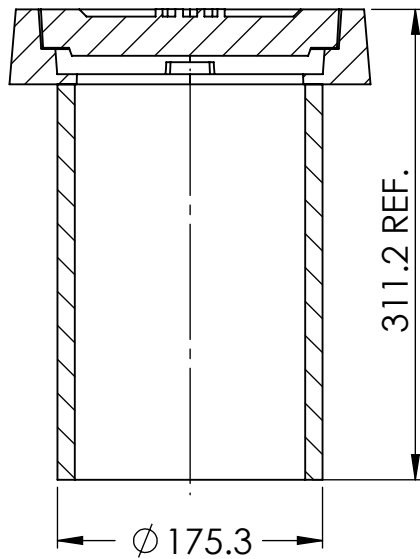
2

1

| ITEM NO. | PART NUMBER | DESCRIPTION | QTY. | MATERIAL |
|----------|------------------|----------------------|------|------------------------------------|
| 1 | KR.69.002.EXT.NL | 6.90" VALVE BOX EXT. | 1 | ASTM A536 65-45-12 DUCTILE IRON |
| 2 | KR.001.VB.LID.W | 6.90 VALVE BOX LID | 1 | ASTM A536 65-45-12 DUCTILE IRON |
| 4 | KR.025.304.06 | 1/4" X 6" HINGE PIN | 1 | AISI 304 SS |



SECTION A-A



| | OPTIONS | ITEM NO. |
|--------------------------|---------|-----------------|
| <input type="checkbox"/> | "W" LID | KR.001.VB.LID.W |
| <input type="checkbox"/> | "G" LID | KR.001.VB.LID.G |
| <input type="checkbox"/> | "S" LID | KR.001.VB.LID.S |
| <input type="checkbox"/> | "P" LID | KR.001.VB.LID.P |
| <input type="checkbox"/> | "F" LID | KR.001.VB.LID.F |

NOTES:
 1) ALL DIMENSIONS IN MILLIMETERS,
 2) UNLESS OTHERWISE SPECIFIED
 DIMENSIONS SHALL HAVE A
 TOLERANCE OF +/- 2mm AND AN
 ADDITIONAL +/- 5mm PER METER
 OF DIMENSION

NOTES: UPPER CASING AND LID FINISH IS BLACK BITUMINOUS ASPHALT
 CORROSION RESISTANT COATING.WEIGHT 25.41 KGS

KAROH

**KR.69.VB.002.EXT.W 6.90" VALVE BOX
 EXTENSION**

IDEAL SPECIFIED PRODUCTS

45 SYLVAN WAY
 WINNIPEG (MB) R2R 2B9
 CANADA

DESIGNED BY: AG

DESIGN DATE: DEC 6, 2019

REFERENCE DRAWING:

DRAWN BY: AG

REV. DATE: DEC 31 / 2020

CITY OF WINNIPEG WATER AND
 WASTE WASTE DEPT
 DRAWING NO: AP-002

CHECKED BY: WF

REV. NO: 1

DO NOT SCALE DRAWING

2

1