

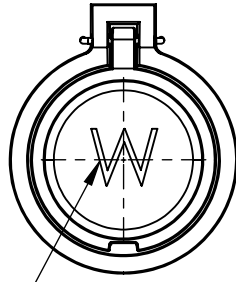
2

1

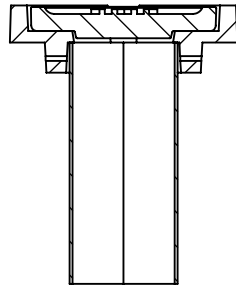
ITEM NO.	PART NUMBER	DESCRIPTION	QTY.	MATERIAL
1	KR.45.VB.002.EXT.NL	4-1/2" VALVE BOX EXT.	1	ASTM A536 65-45-12 DUCTILE IRON
2	KR.001.VB.LID.W	4-1/2" VALVE BOX EXT. LID	1	ASTM A536 65-45-12 DUCTILE IRON
3	KR.025.304.06	1/4" X 6" HINGE PIN	1	A1S1 304 SS

B

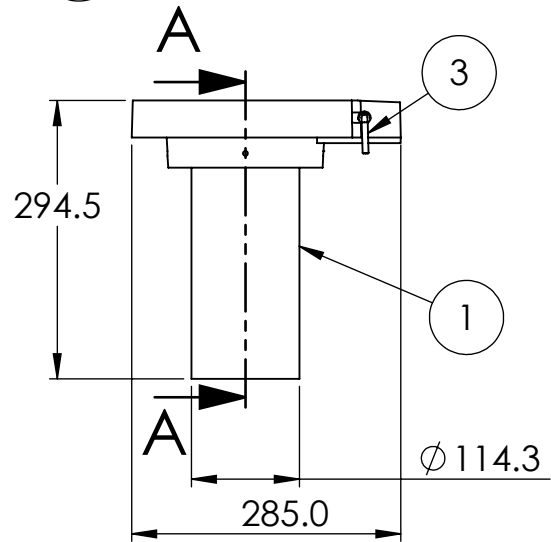
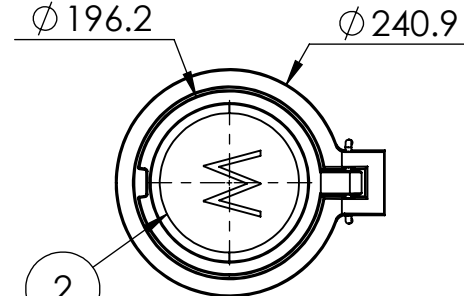
B



OPT. MARKING
W, G, S, P, F



SECTION A-A



	OPTIONS	ITEM NO.
<input type="checkbox"/>	"W" LID	KR.001.VB.LID.W
<input type="checkbox"/>	"G" LID	KR.001.VB.LID.G
<input type="checkbox"/>	"S" LID	KR.001.VB.LID.S
<input type="checkbox"/>	"P" LID	KR.001.VB.LID.P
<input type="checkbox"/>	"F" LID	KR.001.VB.LID.F

NOTES:
1) ALL DIMENSIONS IN MILLIMETERS,
2) UNLESS OTHERWISE SPECIFIED DIMENSIONS SHALL HAVE A TOLERANCE OF +/- 2mm AND AN ADDITIONAL +/- 5mm PER METER OF DIMENSION

NOTES: UPPER CASING AND LID FINISH IS BLACK BITUMINOUS ASPHALT CORROSION RESISTANT COATING.WEIGHT 15.35KGS

A

A

KAROH

KR.45.VB.002.EXT.W 4-1/2" VALVE BOX EXTENSION+LID

IDEAL SPECIFIED PRODUCTS

45 SYLVAN WAY
WINNIPEG (MB) R2R 2B9
CANADA

DESIGNED BY: AG

DESIGN DATE: DEC 6, 2019

REFERENCE DRAWING:

DRAWN BY: AG

REV. DATE: DEC 31 / 2020

CITY OF WINNIPEG WATER AND WASTE WASTE DEPT
DRAWING NO: AP-002

CHECKED BY: WF

REV. NO: 1

DO NOT SCALE DRAWING

2

1