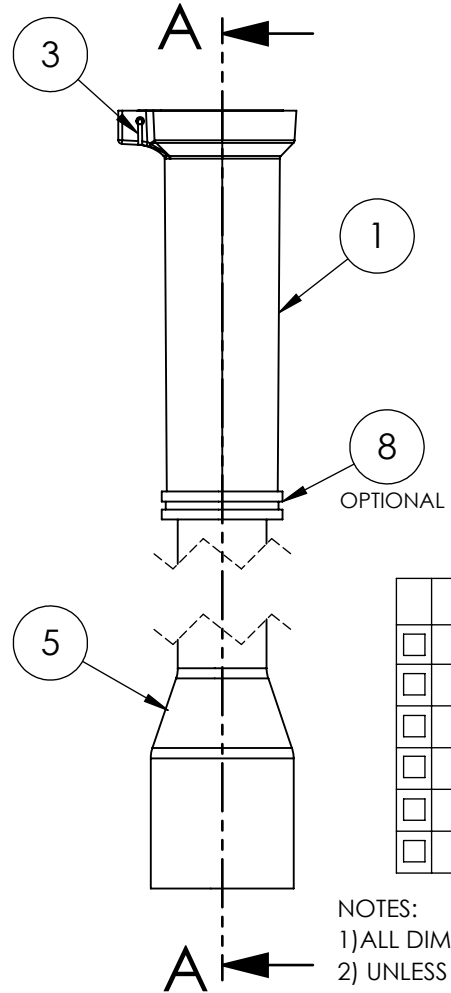
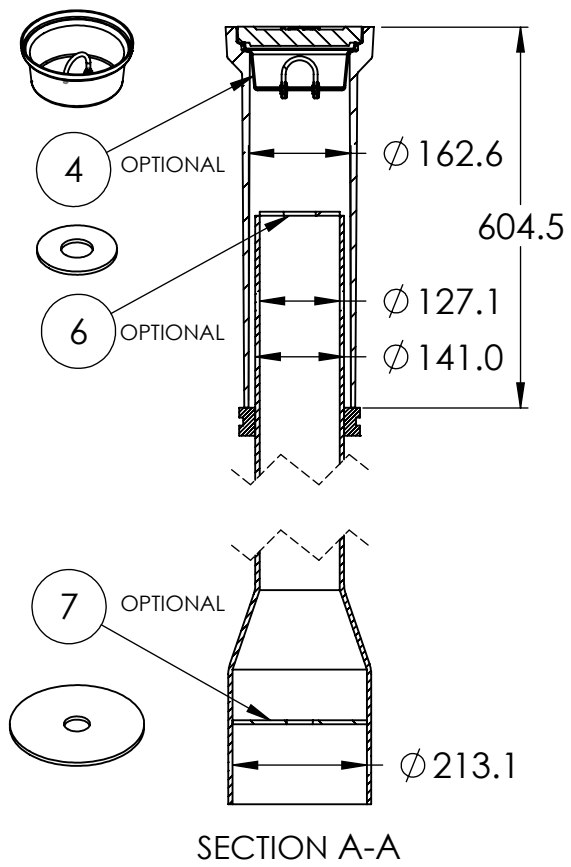
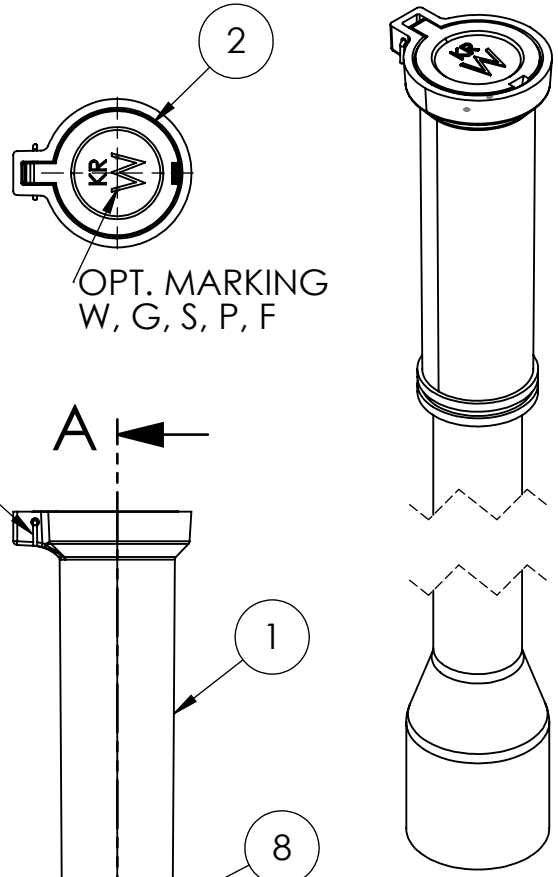


2

1

ITEM NO.	PART NO.	DESCRIPTION	QTY.	MATERIAL
1	KR.001C.VB.UC.NL	VALVE BOX UPPER CASING COUNTRY	1	ASTM A536 65-45-12 DUCTILE IRON
2	KR.001.VB.LID.W or KR.001.VB.LID.S	"W" or "S" VALVE BOX LID	1	ASTM A536 65-45-12 DUCTILE IRON
3	KR.025.304.06	1/4" X 6" HINGE PIN	1	AISI 304SS
4	KR.001.VB.SC	STONE CATCHER	1	PLASTIC
5	KR.001.C.VB.BRP.7	BASE RISER PIPE	1	PVC
6	KR.001C.VB.SD	STONE DISC	1	STEEL
7	KR.001C.VB.CD.PE	CENTERING DISC	1	PLASTIC
8	KR.001C.VB.AR	ADJUSTMENT RING	1	RUBBER



	OPTIONS	ITEM NO.
<input type="checkbox"/>	"W" LID	KR001L-W
<input type="checkbox"/>	"G" LID	KR001L-G
<input type="checkbox"/>	"S" LID	KR001L-S
<input type="checkbox"/>	"P" LID	KR001L-P
<input type="checkbox"/>	"F" LID	KR001-F
<input type="checkbox"/>	LOCKING LID	KR001-L

NOTES:
 1) ALL DIMENSIONS IN MILLIMETERS,
 2) UNLESS OTHERWISE SPECIFIED DIMENSIONS SHALL HAVE A TOLERANCE OF +/- 2mm AND AN ADDITIONAL +/- 5mm PER METER OF DIMENSION

NOTES: UPPER CASING AND LID FINISH IS BLACK BITUMINOUS ASPHALT CORROSION RESISTANT COATING.

KAROH

KR001C COUNTRY VALVE BOX

IDEAL SPECIFIED PRODUCTS
 45 SYLVAN WAY
 WINNIPEG (MB) R2R 2B9
 CANADA

DESIGNED BY: AG	DESIGN DATE: DEC 6, 2019
DRAWN BY: AG	REV. DATE: DEC 31/20
CHECKED BY: WF	REV. NO: 1
DO NOT SCALE DRAWING	

REFERENCE DRAWING:
 MANITOBA WATER SERVICE BOARD
 PART 3 VALVE BOX

2

1

B

B

A

A