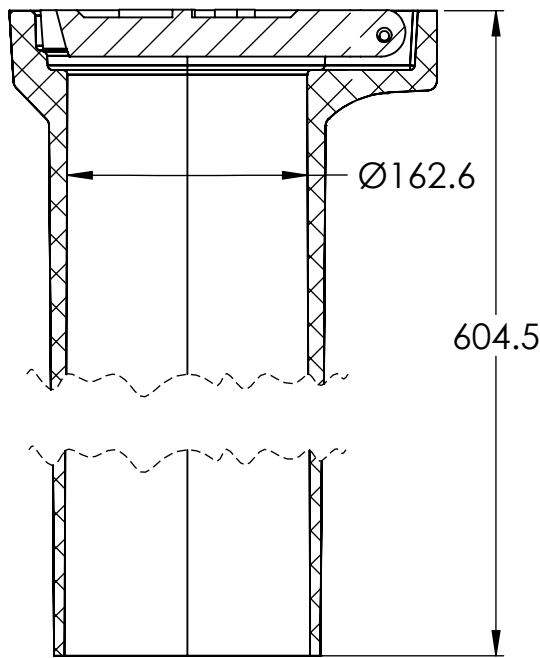
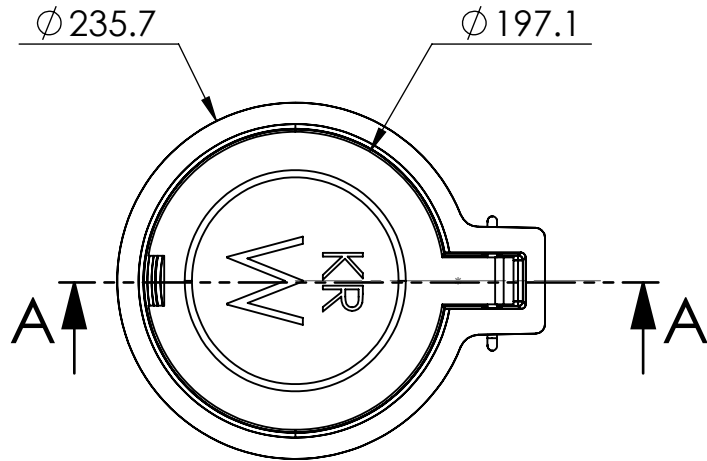


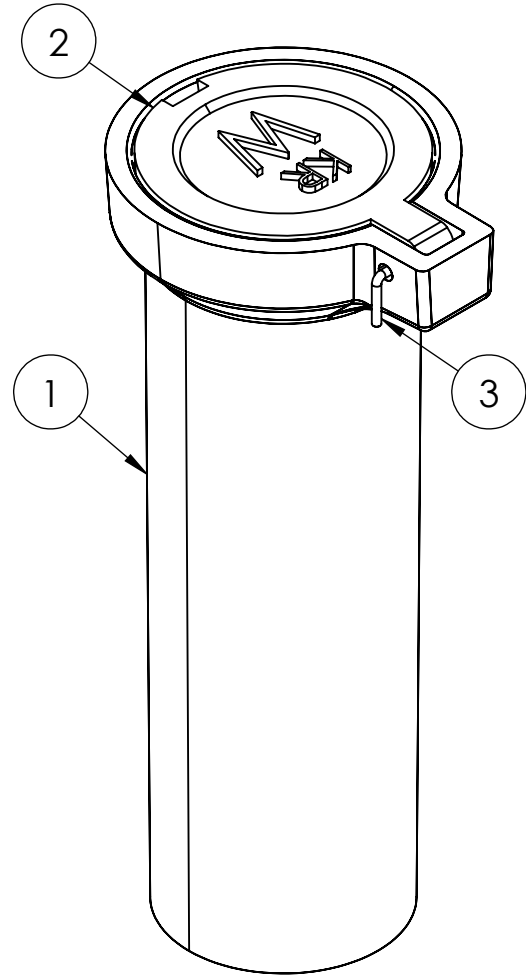
2

1

ITEM NO.	PART NUMBER	DESCRIPTION	QTY.	MATERIAL
1	KR.001C.VB.UC	VALVE BOX UPPER CASTING	1	ASTM A536 65-45 12 DUCTILE IRON
2	KR.001VB.LW or KR.001.VB.LS	LID FOR KR001/C VALVE BOX	1	ASTM A536 65-45 12 DUCTILE IRON
3	KR.0.25.304.06	1/4" X 6" 304 SS HINGE PIN	1	304 S.S.



SECTION A-A



MATERIAL ASTM A536 65-45 12 DUCTILE IRON, Weight 34 KGS

KAROH

KR.001C.VB.WL
KR.001C.VB.SL

VALVE BOX UPPER CASTING C/W "W" LID
VALVE BOX UPPER CASTING C/W "S" LID

IDEAL SPECIFIED PRODUCTS

45 SYLVAN WAY
WINNIPEG (MB) R2R 2B9
CANADA

DESIGNED BY: AG	DESIGN DATE: DEC. 06, 2019.
DRAWN BY: AG	REV. DATE: DEC. 09, 2020.
CHECKED BY: WF	REV. NO: 1
DO NOT SCALE DRAWING	

REFERENCE DRAWING:
MANITOBA WATER SERVICE BOARD
PART 3 VALVE BOX

2

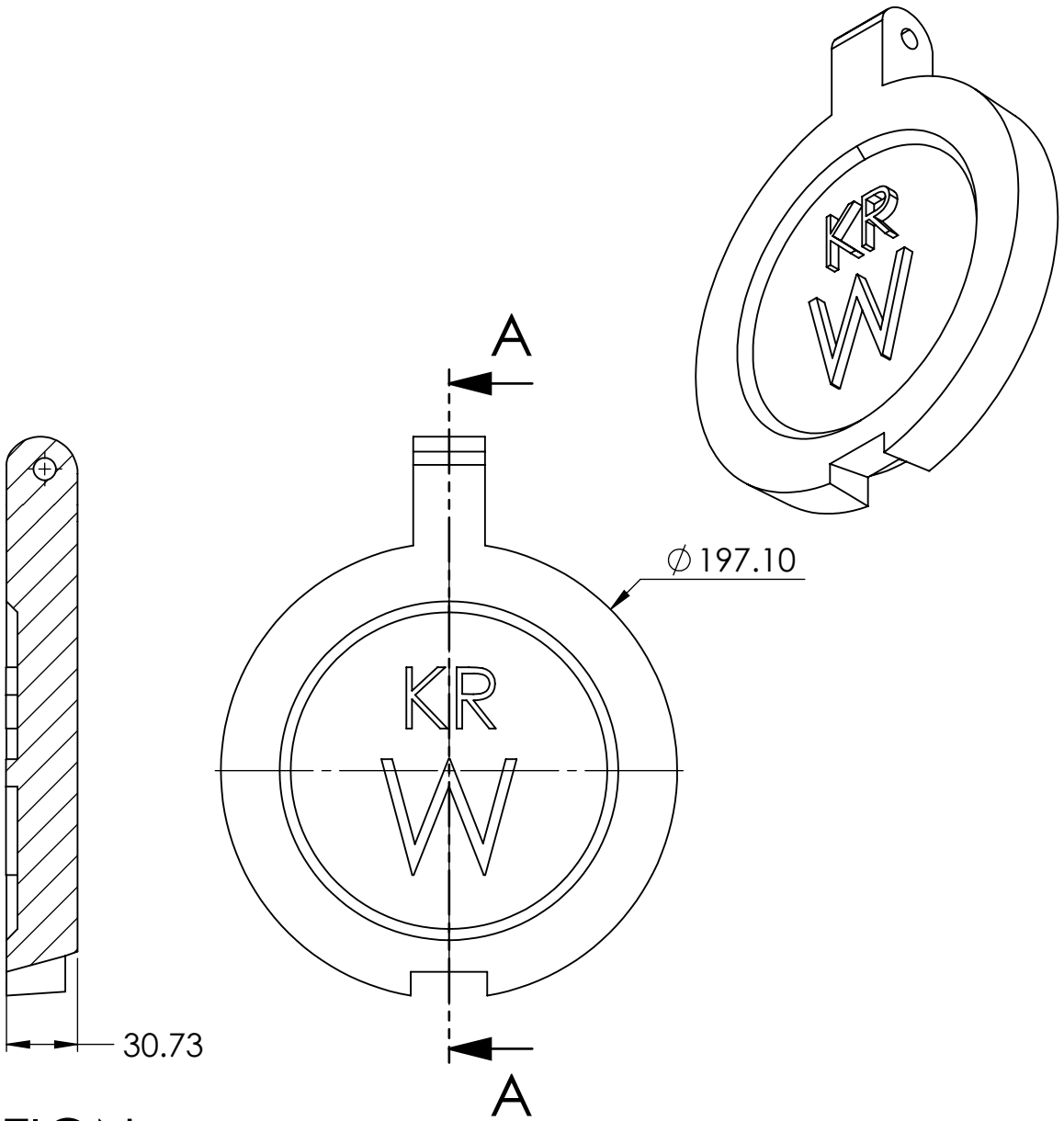
1

2

1

B

B



SECTION A-A

SCALE 1 : 3

MATERIAL: A536 65 45 12
DUCTILE IRON, WEIGHT 5.93KGS

A

A

VALVE BOX LID "S"	KR.001.VB.LS	" S" LID FOR KR001/C VALVE BOX
VALVE BOX LID "W"	KR.001.VB.LW	" W" LID FOR KR001/C VALVE BOX

KAROH

KR VALVE BOX LID

IDEAL SPECIFIED PRODUCTS

45 SYLVAN WAY
WINNIPEG (MB) R2R 2B9
CANADA

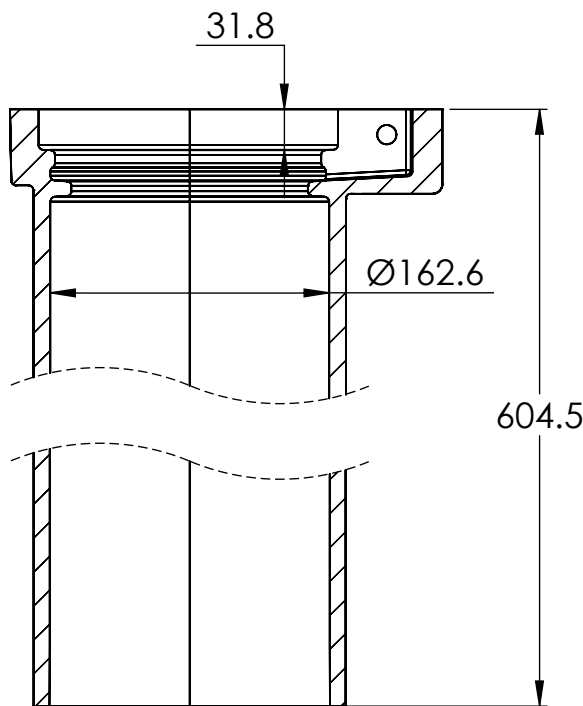
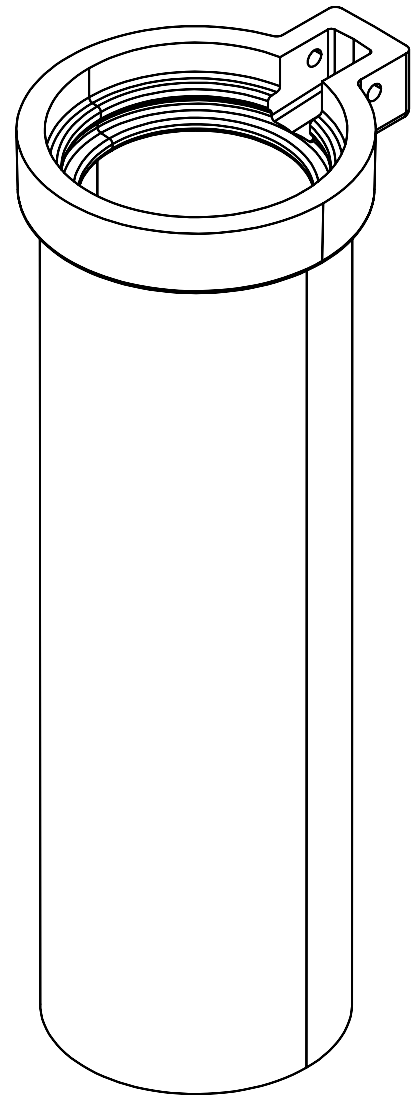
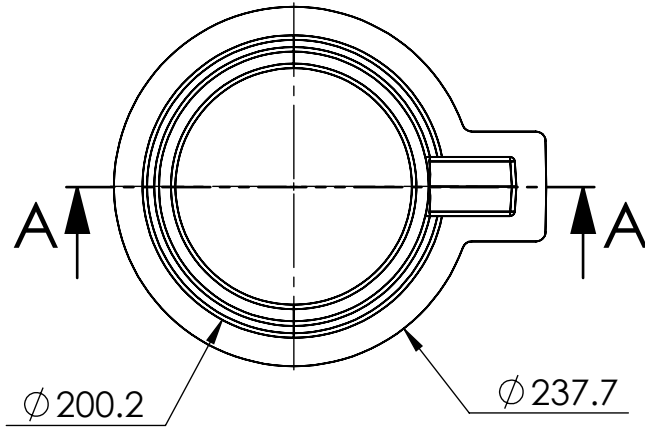
DESIGNED BY: AG	DESIGN DATE: DEC. 06, 2019.	REFERENCE DRAWING: MANITOBA WATER SERVICE BOARD PART 3 VALVE BOX
DRAWN BY: AG	REV. DATE: DEC. 09, 2020.	
CHECKED BY: WF	REV. NO: 1	
DO NOT SCALE DRAWING		

2

1

2

1



SECTION A-A

MATERIAL: A536 65 45 12
DUCTILE IRON, WEIGHT 27.7KGS

KR.001C. VB. UC.

VALVE BOX UPPER CASTING
NO LID

KAROH

KR COUNTRY VALVE BOX

IDEAL SPECIFIED PRODUCTS

45 SYLVAN WAY
WINNIPEG (MB) R2R 2B9
CANADA

DESIGNED BY: AG

DESIGN DATE: DEC. 06, 2019.

REFERENCE DRAWING:

DRAWN BY: AG

REV. DATE: DEC 09, 2020.

MANITOBA WATER SERVICE BOARD
PART 3 VALVE BOX

CHECKED BY: WF

REV. NO: 1

DO NOT SCALE DRAWING

2

1