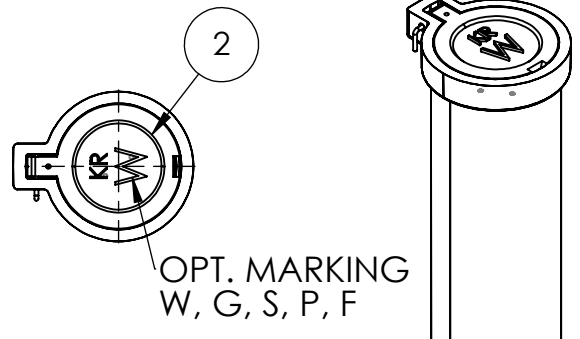
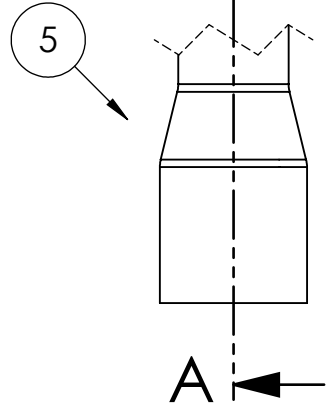
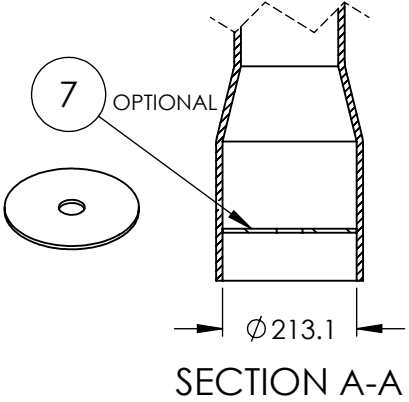
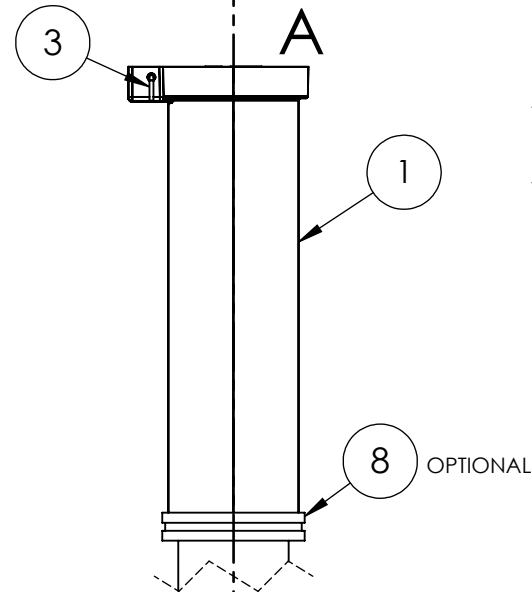
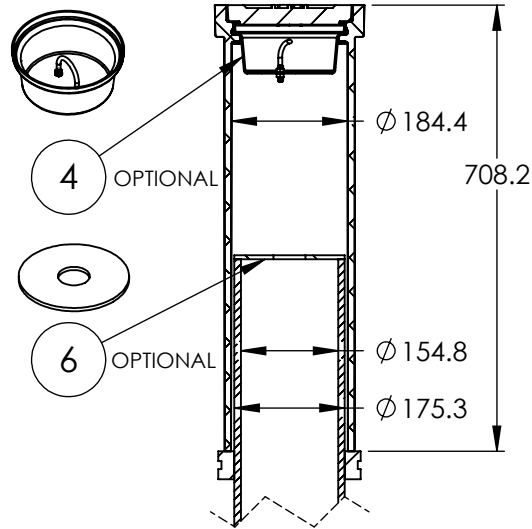


ITEM NO.	PART NO.	DESCRIPTION	QTY.	MATERIAL
1	KR.001.VB.UC.NL	VALVE BOX UPPER CASTING	1	ASTM A536 65-45-12 DUCTILE IRON
2	KR.001.VB.LID.W or KR.001.VB.LID.SL	"W" or "S" VALVE BOX LID	1	ASTM A536 65-45-12 DUCTILE IRON
3	KR.025.304.06	1/4" X 6" HINGE PIN	1	AISI 304SS
4	KR.001.VB.SC	STONE CATCHER	1	PLASTIC
5	KR.001.VB.C9.BRP	BASE RISER PIPE	1	C900 PVC
6	KR.001.VB.SD	STONE DISC	1	STEEL
7	KR.001.VB.CD.PE	CENTERING DISC	1	PLASTIC
8	KR.001.VB.AR	ADJUSTMENT RING	1	RUBBER



B

B



	OPTIONS	ITEM NO.
<input type="checkbox"/>	"W" LID	KR001L-W
<input type="checkbox"/>	"G" LID	KR001L-G
<input type="checkbox"/>	"S" LID	KR001L-S
<input type="checkbox"/>	"P" LID	KR001L-P
<input type="checkbox"/>	"F" LID	KR001L-F
<input type="checkbox"/>	LOCKING LID	KR001L-L

NOTES:  
 1) ALL DIMENSIONS IN MILLIMETERS,  
 2) UNLESS OTHERWISE SPECIFIED DIMENSIONS SHALL HAVE A TOLERANCE OF +/- 2mm AND AN ADDITIONAL +/- 5mm PER METER OF DIMENSION

NOTES: UPPER CASING AND LID FINISH IS BLACK BITUMINOUS ASPHALT CORROSION RESISTANT COATING.

A

A

**KAROH**

**KR001 VALVE BOX-CITY**

**IDEAL SPECIFIED PRODUCTS**

45 SYLVAN WAY  
 WINNIPEG (MB) R2R 2B9  
 CANADA

DESIGNED BY: AG	DESIGN DATE: DEC. 06 / 2020
DRAWN BY: AG	REV. DATE: DEC 31 / 2020
CHECKED BY: WF	REV. NO: 1
DO NOT SCALE DRAWING	

REFERENCE DRAWING:  
 CITY OF WINNIPEG WATER AND WASTE WASTE DEPT  
 DRAWING NO: AP-001